



APX PROPERTIES

LOCAL | TRUSTED | EXPERTS



Downham Way, Bromley, BR1 5EW

£400,000



Downham Way, Bromley, BR1 5EW

£400,000

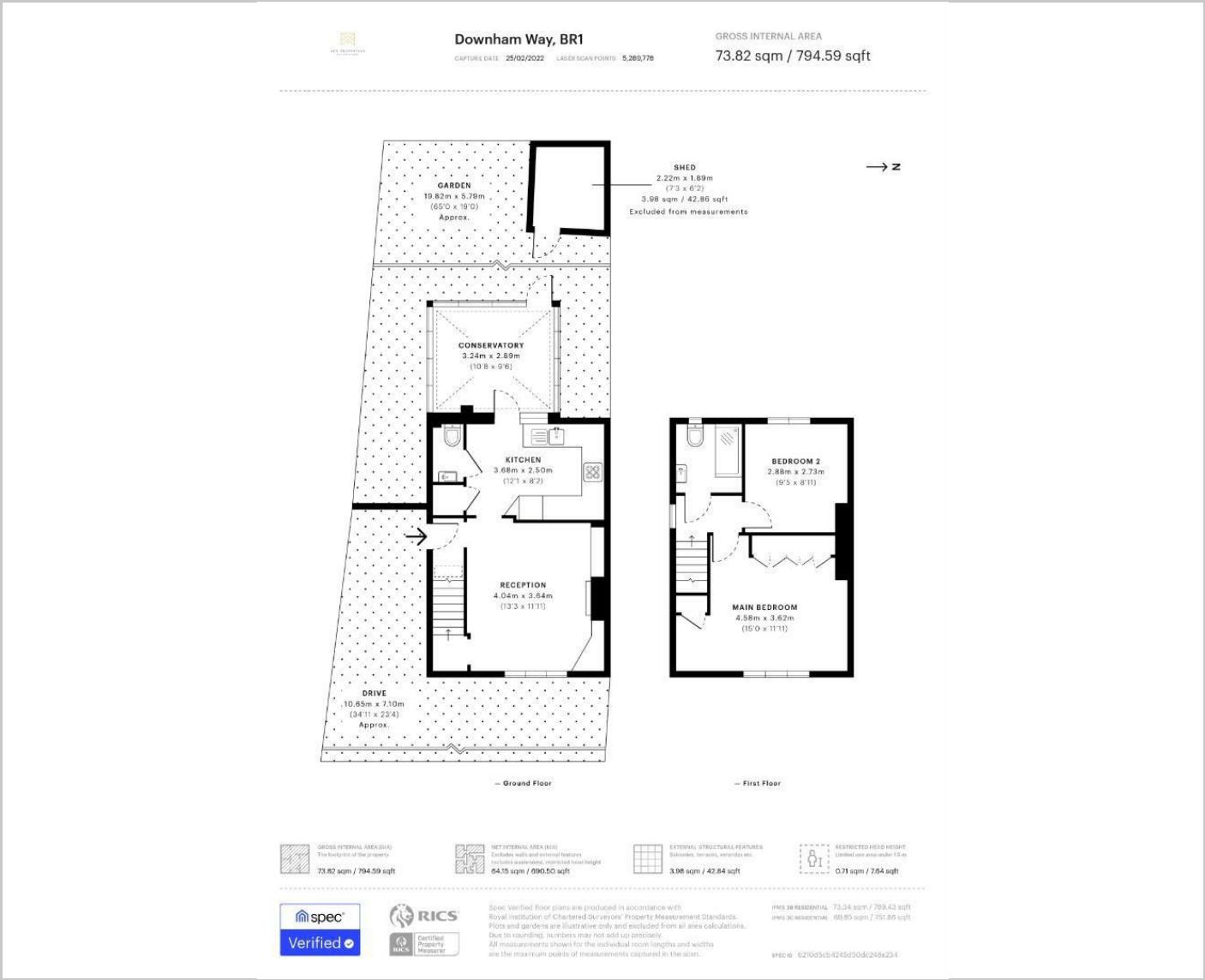
****OPEN DAY - SATURDAY 12th MARCH - via APPOINTMENT ONLY****

APX Properties are DELIGHTED to Present this IMMACULATE Two DOUBLE Bedroom END OF TERRACE family home on DOWNHAM WAY! Boasting of a LARGE Reception room and an integrated kitchen. TASTEFULLY decorated throughout! A fantastically sized REAR GARDEN, DRIVE-WAY FOR TWO CARS. Further benefits include, a CONSERVATORY, walking distance to schools, shops and Grove Park Train Station. A BEAUTIFUL property that will not hang around long, viewings on a first come first serve basis.

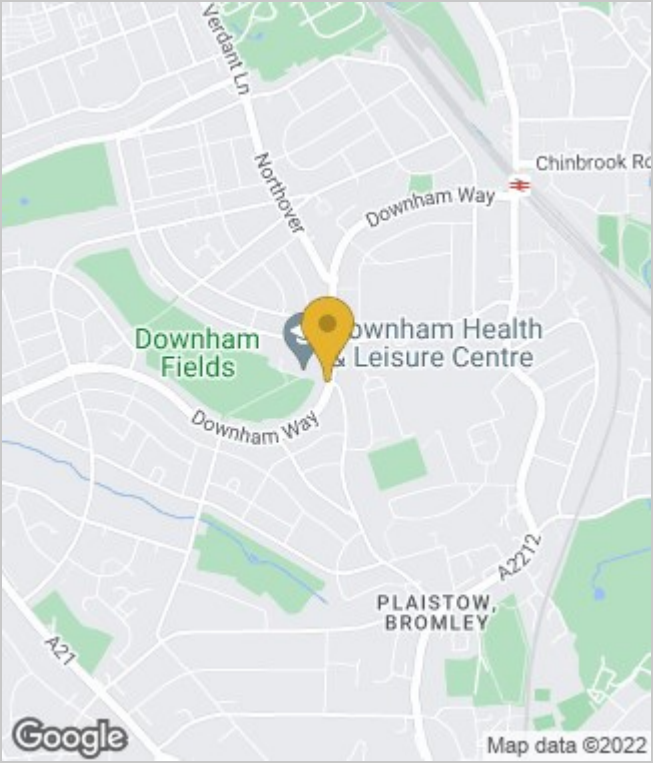
- END OF TERRACE
- TASTEFULLY DECORATED THROUGHOUT
- TWO DOUBLE BEDROOMS
- FANTASTIC LIVING SPACE
- INTEGRATED KITCHEN
- IDEAL FAMILY HOME
- BEAUTIFUL GARDEN
- PARKING FOR TWO CARS
- WALKING DISTANCE TO GROVE PARK STATION
- SOUGHT AFTER LOCATION



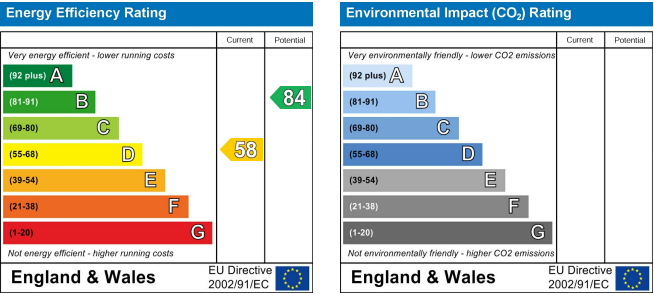
Floor Plans



Area Map



Energy Performance Graph



These particulars, whilst believed to be accurate are set out as a general outline only for guidance and do not constitute any part of an offer or contract. Intending purchasers should not rely on them as statements of representation of fact, but must satisfy themselves by inspection or otherwise as to their accuracy. No person in this firms employment has the authority to make or give any representation or warranty in respect of the property.

SALES 0203 7450 811
LETTINGS 0203 7450 812
MORTGAGES 0203 7450 815

E info@apxproperties.co.uk
W www.apxproperties.co.uk

424 Downham Way
Bromley, Kent, BR1 5HR

